

2017-2022
TRANSPORTATION IMPROVEMENT PROGRAM



June 6, 2017

INTRODUCTION

SUATS ORGANIZATION

The purpose of the Sumter Area Transportation Study (SUATS) as the Metropolitan Planning Organization (MPO) for the Sumter area is to establish and maintain a continuing, comprehensive, and cooperative transportation planning process. While meeting the appropriate federal and state requirements, this process promotes the development of a safe, effective, efficient and environmentally sensitive multi-modal transportation system for moving people and goods in the SUATS area.

The study area is approximately in the center of Sumter County, South Carolina. The City of Sumter and outlying area beyond the corporate limits as shown comprise the SUATS area.

SUATS is monitored by two committees, the Policy Committee, which has final local approval and authority on all major transportation decision, policies, and programs of SUATS, and the Study Team, which provides advice to the Policy Committee and staff on technical methods, procedures and standards that are used in the development of transportation plans and programs.

TRANSPORTATION IMPROVEMENT PLAN (TIP)

The Transportation Improvement Program details all projects and programs that have obligated funding from FHWA. These projects and programs derive from the SUATS Long Range Transportation Plan. The TIP has been developed by SUATS with the cooperation of SCDOT and SWRTA. The TIP has been advertised and made available for public comment. It covers a period of 5 years but is updated yearly. SUATS, in cooperation with SCDOT and SWRTA, assures that all projects and programs are fully fundable.

The TIP also includes all federally supported capital and non-capital surface transportation projects within the boundaries of the MPO as well as all regionally significant projects requiring an action by the FHWA or the FTA.

PUBLIC INVOLVEMENT

SUATS follows a Public Involvement Plan that details the approach, values, and activities that are followed to ensure full and effective public participation in the planning process. A variety of methods are used to solicit public input, including small group presentations, news releases, distribution of printed and electronic newsletters, surveys, public workshops, development of corridor studies and area plans, and public hearings.

FUNDING

SUATS projects are funded through federal and state transportation funds. Guideshare Funds, funds for road improvements, are allocated by SCDOT through the Guideshare Program.

The S.C. Transportation Commission sets aside approximately \$138 million dollars of FHWA and SCDOT funds each year and distributes the money among the state's eleven MPOs and ten Councils of Governments based on population and vehicle miles of travel in each region. The Guideshare sets the annual budget for highway improvements within each MPO or COG, and total project costs in any given year normally cannot exceed the Guideshare apportionment.

Road improvements may include constructing new roads, adding traffic lanes to existing roads, constructing paved shoulders, installing traffic signals, constructing sidewalks or bike lanes, or making safety improvements. Major maintenance improvements may also be included, such as resurfacing a road. However, minor maintenance activities such as patching potholes are not funded through SUATS, but are handled directly by SCDOT maintenance units.

In the last cycle, SUATS apportionment from the Guideshare program was \$15.566 million from FY2010 to FY2015. Of this amount, approximately \$6.766 million is devoted to debt service from FY2010 to FY2015.

In this cycle, SUATS apportionment from the Guideshare Program is \$14.570 million from FY 2014 to FY 2019. Of this amount, approximately \$6.221 million is devoted to debt service from FY 2014 to FY 2019.

Transportation Enhancement Projects/Transportation Alternative Program Projects

In 1991, Congress passed a landmark transportation bill, the Intermodal Surface Transportation Efficiency Act (ISTEA). The Transportation Enhancement Program was created by ISTEA and has been widely popular, in part because it funds projects that had frequently been left out of highway improvement plans in past years. Subsequently, ISTEA was replaced by Safe, Accountable, Flexible, Efficient Transportation Equity Act: A Legacy for Users (SAFETEA-LU) by Congress in August 2005. On July 6, 2012, a new transportation bill was signed into law known as Moving Ahead for Progress in the 21st Century (Map-21). The SCDOT FY 2013 Funding Plan Transportation Enhancement Program is no longer a stand alone funding program. Rather, it is a statewide \$9 million open competitive funding program among other eligibilities such as Safe Route to School. The Program name was changed to Transportation Alternative Program (TAP). The applicant (COG/MPO) must submit applications to SCDOT for funding and the 20% local matching portion is still required. A list of enhancement projects for bicycle and pedestrian facility is identified below. The list is extracted from SUATS Long Range Plan and is not listed in priority of importance. More information is available on the internet at www.enhancements.org.

SUATS Long Range Transportation Plan
Enhancement Projects Bike and Pedestrian Facility List

Project Type	Location	Description
Trails/Multi-Use	Dillon Park to Green Swamp	Bike and Pedestrian Trail along Shot Pouch Creek/Extension of Cypress Trail
	Lafayette Dr.	Multi-use trail from Calhoun St. to By-pass, west side of Lafayette
	Turkey Creek	Bike and Pedestrian Trail along Turkey Creek
Bike Lanes	Lynam Rd.	Striped Bike Lane on Lynam Rd. connecting Loring Mill and McCray's Mill facilities
Project Type	Location	Description
Bike - Wide Lanes	Wise Drive to Cypress Trail	Widen existing travel lanes to accommodate bicycles
	Alice Drive	Camden Hwy. to Wise, widen lanes
	Red Bay Rd.	Widen lanes between S. Main and Boulevard
Bike - Paved Shoulders	Brewington Rd.	Long Segment between Camden Hwy. and US 378 to east
	Jefferson Rd.	521 to Queen Chapel
	McCrays Mill	St. Paul's Church to Stadium Road
Sidewalks	Sumter H.S.	Connect neighborhoods and schools within network
	Wilder Elementary	
	Crosswell Dr. Elementary	
	Alice Drive Schools	
	Wilson Hall School	
Previous Study Team		
Recommendations	Carter Rd.	Wilson Hall Rd. to U.S. 378
	Oswego Rd.	Bypass to Brewington Rd.
	Adams St.	Alice Dr. to Guignard
	Highland Ave.	Broad St. to Jackson St.
	S. Harvin St.	Shannon St. to Manning Ave.
	Lewis Rd.	McCrays Mill to Lucian Lake Dr.
Other Identified Projects	Manning Avenue	Bridge, Streetscape, Pedestrian, Intersections from bridge to Lafayette
	Loring Mill	Sidewalks from residences to intersection at Patriot Pkwy./Wise Drive
	City-wide	Median plantings in lieu of suicide lanes (alone or combined w/other access mgmt)

Note: the LRTP did not rank these projects; they are listed in no particular order except by category.

SECTION II

MEMBERSHIP

Membership will consist of the following:

Policy Committee (Voting)

1. ***Mayor, City of Sumter**
2. ***County Council Chairman**
3. City Council Member
4. County Council Member
5. Legislative Delegation – Resident Senator,
Resident Representative (2)
6. Planning Commission Chairman
7. Sumter County Development Board Chairman
8. County Transportation Committee Chairman

Policy Committee (Ex-officio)

1. City Manager
2. County Administrator
3. Fifth Congressional District Highway
Commissioner
4. Sixth Congressional District Highway
Commissioner
5. Shaw AFB Commander (or designee)

Enhancement Committee

1. **Senior Transportation Planner, Sumter
City-County Planning Commission**
2. Planning Director, Sumter City-County
Planning Commission
3. Public Services Director, City of Sumter
4. Public Works, County of Sumter
5. Shaw AFB Community Planner
6. Director of Santee-Wateree RTA
7. Chamber of Commerce Representative
8. Director of Community Development,
City of Sumter
9. Finance Director, City of Sumter

Technical Coordinating Committee (Study Team)

1. **Planning Director, Sumter City-County
Planning Commission**
2. Public Services Director, City of Sumter
(or designee)
3. Public Works Director, County of Sumter
4. SCDOT District Traffic Engineer
5. SCDOT Planning Department Representative
6. FHWA Planning & Environmental
Engineer
7. SCDOT District Project Engineer
8. Shaw AFB Community Planner
9. Director Santee-Wateree RTA
10. Chamber of Commerce Representative
11. Director of Community Development, City
of Sumter
12. Finance Director, City of Sumter
13. Sumter County Active Lifestyles
Chairman, USC
14. Senior Transportation Planner, Sumter City-
County Planning Commission

Steering Committee

1. **Senior Transportation Planner, Sumter
City-County Planning Commission**
2. Finance Director, City of Sumter
3. Statewide Planning, SCDOT
4. Planning Director, Sumter City-County
Planning Commission
5. Finance Director, SCDOT
6. Pre-construction Project Engineers
SCDOT
7. Planning & Environmental Engineering
FHWA

Chairman of each committee is shown in bold print.

***Chairman for the Policy rotates annually between these two members.**

SUATS Financial Statement

All Cost in Thousand		Previous											Total Cost	
Federal Transit Administration		STIP(s)		FY 2014	FY 2015	FY 2016	FY 2017	FY 2018	FY 2019				2014-2019	Funding Source
	Santee Wateree RTA (urbanized area)	944 op,ca		606 op, 260 ca	678, 120 PL	887	873						3,424	Section 5307
	Santee Wateree RTA (intermodal transp. Center)	950												Section 5309
	Sumter County DSN Board (purchase of service)	40 ca		53ps, 40c, 12 op			50 ca, 50 ps						205	Section 5310
	Sumter Senior Services (purchase of service)	46ca		30 ps, 38 ps			50 ca						118	Section 5310
	Sumter Nat. Fed. of the Blind (purchase of serv.)			2 ps, 3 ps			2.5 ps						7.5	Section 5310
	Wateree AIDS Task Force			24 ca, 10 op									34	Section 5310
	Santee Wateree RTA (Rural Transit)	508 adm			490	587	613						1,670	Section 5311
		218 ca												
		543 op												
The funding level for the SWRTA represents the total funding for the entire four county service area (Clarendon, Kershaw, Lee and Sumter)														
	Santee Lynches COG (planning)	52 pl												Section 5311
	Santee Lynches COG			63 ca, 5 adm									68	Section 5316
	Santee Wateree RTA (operations)													Section 5316
	Sumter County DSN (operations & capital)			50 op, 85 ca									135	Section 5316
	SLCOG (WIA)			6 op									6	Section 5316
	Sumter DSNB			100 ca, 47 op									147	Section 5317
	Sumter Senior Services													Section 5317
	Santee-Lynch COG (Admin, Ops & Capital)			5 adm, 43 ca									48	Section 5317
	Santee Wateree RTA			59.5 ca			75						134.5	Section 5339

c=construction;r=right of way; adm=administration;op=operators;ca=capital;pl=planning;ps=purchase of service

Revised 4/27/17

BRIDGE REPLACEMENT		FY 2017	FY 2018	FY 2019	FY 2020	FY 2021	FY 2022
Project	Location	Planned	Planned	Planned	Planned	Planned	Planned
US 76 By Pass Over US 76 Business	E. Liberty / Myrtle Beach Hwy.	1,500 P				50R	5,900C
US 76 By Pass Over US 15 N.	N. Lafayette / N. Main St.	1,500 P				100R	5,700 C

Revised
5-11-17

Note: the number is in thousand, P=Preliminary Engineering; C=Construction; ROW or RW = Right of Way

SAFETY PROJECT(S)												
Project	COUNTY	MPO	STIP CATEGORY	Federal Program	FY2017 Planned	FY2018 Planned	FY2019 Planned	FY2020 Planned	FY2021 Planned	FY2022 Planned	2017-2022 Project Cost	
Description												
INTERSECTION IMPROVEMENTS			SAFETY	HSIP								
US 378 (Robert E. Graham Frwy) @ SC 763 (Myrtle Beach Hwy) & S-1430 (N. Pike E. Rd.) & S-1431 (S. Pike Rd.)					50 RW	650 C	0	0	0	0	700	
US521 (Thomas Sumter Hwy. @ S-1342 (Camden Hwy.))					150 PE 14.9 RW	370 C					534.9	
Section Corridor Improvements												

Revised 11-30-2017

ROADWAY RESURFACING PROJECTS IN SUATS	
Location	Termini
SC 441	0.43 miles N Of US 76 to Frierson Rd
SC 441	0.12 miles n of S-822 (Oakland Dr. to S-803 (Dodgen Hill Rd)

SUMTER COUNTY PAVEMENT PRESERVATION		
US 401		US Bus (Broad St) to S-5 (Main St)
US 401		S-107 (Harvin St) to 0.5 miles North S-1429 (S Pike East)
S-25		Clarendon County Line to US 15 South
S-77		US 15 (Pocalla Rd) to SC 120 (Alice Dr)
S-380		SC 441 (Loring Mill Rd) to SC 120 (Alice Dr)
S-467		US 76/378 to S-692 (Wilson Hall Rd)
S-692		S-467 (Wilson Hall Rd) to S-380 (Wise Dr)

Revised 11-3-15

SUATS
Calendar Year 2016 Quarter 3

SUATS SUMMARY SHEET (Sumter County)											UPDATED AS OF: 10/26/2016		
		Previous Obligations	FY 2015	FY 2016	FY 2017	FY 2018	FY 2019	FY 2020	Other Sources of Funds	Total Funding	Cost to Complete	Total Project Cost	Expenditures 9/30/2016
CLOSED PROJECTS	PE	3,875	0	0	0	0	0	0	0	3,875	0	3,875	3,947
	ROW	7,420	0	0	0	0	0	0	50	7,470	0	7,470	6,825
	Const	25,371	0	0	0	0	0	0	2,685	28,055	0	28,055	28,627
	Total	36,665	0	0	0	0	0	0	2,735	39,400	0	39,400	39,400
Alice Drive (Phase I & II) 0034778 Wesmark Blvd to US 521 **Pending Closure	PE	1,643	0	(171)	0	0	0	0	0	1,471	0	1,471	1,471
	ROW	2,265	0	(137)	0	0	0	0	0	2,128	0	2,128	2,128
	Const	4,534	0	120	0	0	0	0	1,414	6,068	0	6,068	6,068
	Total	8,442	0	(188)	0	0	0	0	1,414	9,668	0	9,668	9,668
Alice Drive (Phase III) 0029713 Wise Drive to Wesmark Blvd	PE	0	0	0	0	0	0	0	0	0	0	0	0
	ROW	2,100	0	0	0	0	0	0	0	2,100	0	2,100	2,455
	Const	8,804	718	0	0	0	0	0	153	9,675	0	9,675	8,221
	Total	10,904	718	0	0	0	0	0	153	11,775	0	11,775	10,676
US 521 (Broad Street) Improvements P027103 (Near Bultman Road to near Market Street)	PE	250	0	0	0	0	0	0	0	250	0	250	71
	ROW	0	0	14	0	0	0	0	0	14	0	14	10
	Const	0	0	0	2,475	0	0	0	0	2,475	0	2,475	0
	Total	250	0	14	2,475	0	0	0	0	2,739	0	2,739	81
Pinewood @ McCray's Mill Road Intersection Improvements P030734	PE	0	0	300	0	0	0	0	0	0	0	0	0
	ROW	0	0	0	0	200	0	0	0	0	0	0	0
	Const	0	0	0	0	0	1,000	0	0	0	0	0	0
	Total	0	0	300	0	200	1,000	0	0	0	0	0	0
TOTAL PE		5,767	0	129	0	0	0	0	0	5,596	0	5,596	5,489
TOTAL ROW		11,785	0	(123)	0	200	0	0	50	11,712	0	11,712	11,418
TOTAL Const		38,709	718	120	2,475	0	1,000	0	4,251	46,273	0	46,273	42,917
GRAND TOTAL Total		56,262	718	126	2,475	200	1,000	0	4,301	63,582	0	63,582	59,825
			FY 2015	FY 2016	FY 2017	FY 2018	FY 2019	FY 2020					
Guideshares			2,478	2,536	2,536	2,536	2,536	2,536					
Carryforward			0	0	1,050	103	1,443	1,996					
Advancement (SCDOT)			0	0	0	0	0	0					
Program Funds			2,478	2,536	3,586	2,639	3,980	4,532					
Total Debt Service			(1,053)	(823)	(1,008)	(996)	(984)	(738)					
Total Payback (SCDOT)			(707)	(538)	0	0	0	0					
Total Available funds for Projects			718	1,175	2,578	1,643	2,996	3,794					
Total Project Costs			(718)	(126)	(2,475)	(200)	(1,000)	0					
Balance			0	1,050	103	1,443	1,996	3,794					

Includes Updated GS Allocations for Emma's Law in FY2015

Includes Updated Debt Service Amounts as of 8/1/2014

SUATS NON-Guideshare/Earmark-Revitalization Project Calendar Year June 2017

SUATS Project Financial Summary Sheet (in thousand \$)

Project Name		FY 2017	FY2018	FY2019	FY2020	Total Funding	Total Proj Cost	Expenditures	
N. Main St Revitalization	PE	150							
	ROW		125						
	Construction from Earmark funding			7,125					
	Construction from Local funding			800					
	Total	150	125	7,925		8,200			
Manning Ave Revitalization	PE	150							
	ROW		125						
	Construction from Earmark funding			7,125					
	Construction from Local funding			800					
	Total	150	125	7,925		8,200			

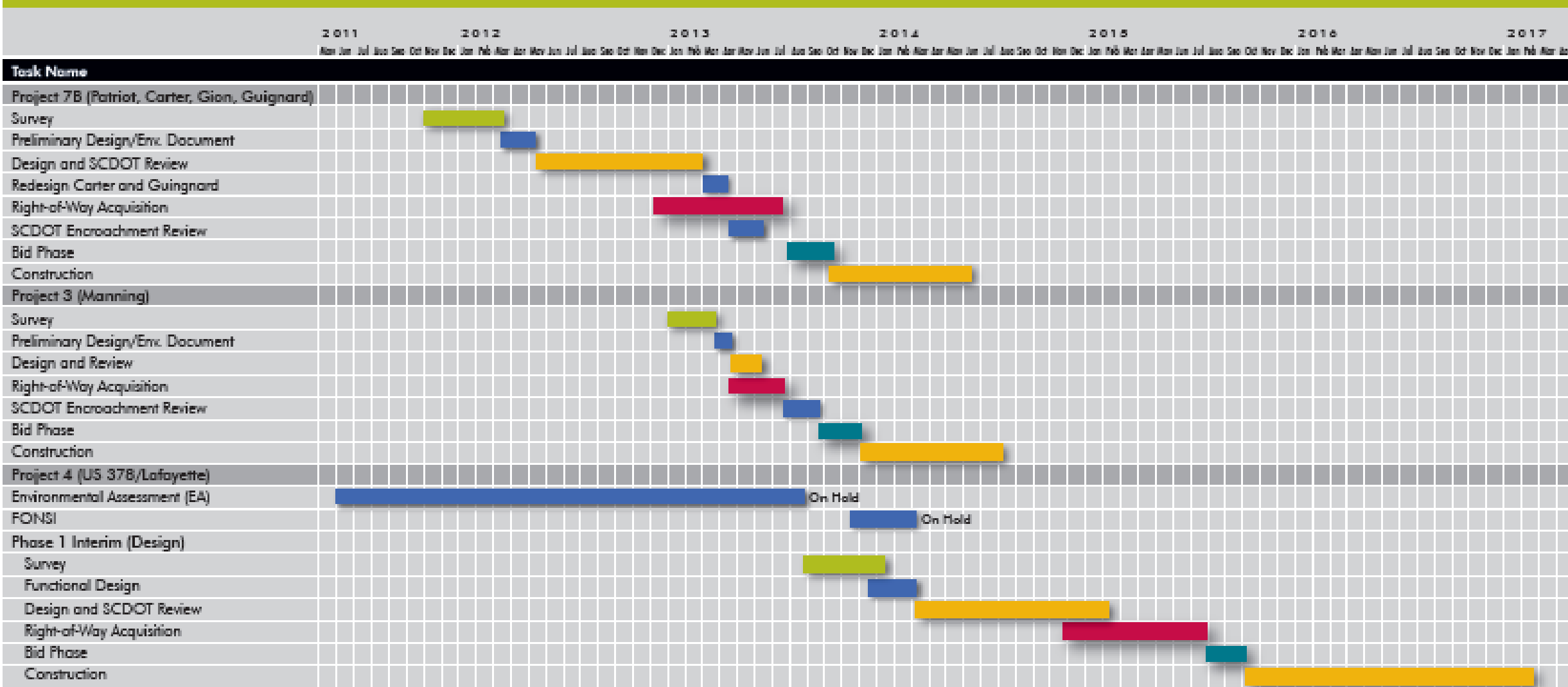
as of 4/27/2017

SUATS Financial Statement

Enhancement Projects	Funding	FY2010	FY 2011	FY 2012	FY 2013	FY 2014	FY 2015	Total	STIP
S. Harvin Street Sidewalk construction project				229,600					Project Cost 287,000
									Local Match 57,400

(Cost in Thousands)									
PIN #	Locally Funded Projects	FY 2010	FY 2011	FY 2012	FY 2013	FY 2014	FY 2015	TIP Cost (2010-2015)	Funding source
	Broad St. (US 76/378) & Carter Rd. (Intersection safety)				300 PRC			300	Sumter Sales Tax
	Broad St. & Gion St. (Intersection safety)				300 PRC			300	Sumter Sales Tax
	Broad St. (US 76/378) @ Patriot Pkwy (SC441) (Intersection safety)				300 PRC			300	Sumter Sales Tax
	Lafayette Dr. (US 15) @ Guignard (Intersection safety)				300 PRC			300	Sumter Sales Tax
	Lafayette Dr. (US 15) @ Manning Ave. (Southern Gateway)				671 PRC			671	Sumter Sales Tax
	Lafayette Dr. (US 15) @ Graham Freeway (Lafayette Interchange)				6,000 PRC			6,000	Sumter Sales Tax
	Subtotal							7,871	(physical reconst)

SUMTER SALES TAX PROJECTS | DESIGN SCHEDULE



Submittal Legend: Preliminary NEPA, 25%, 50%, Final

Schedule subject to change based on contract initiation and review time.

Updated 9/11/13